

Red-Tailed Hawk District
2010 Day Camp

Centennial Luau



Walking
Leader
Guide

Table of Contents

Key Staff Contact Information.....	5
Welcome/Introduction.....	7
Transportation.....	8
Leadership Requirements.....	8
10 Youth-Protection Policies.....	9
What to Bring to Camp.....	10
Camp Week.....	11
Daily Parking.....	11
Daily Check-in.....	11
Early Check-out.....	11
Attire.....	11
Opening Flag.....	12
Flag Etiquette.....	12
Daily Schedule.....	12
Noon-time Surprise.....	12
Free-Time Opportunities.....	12
Additional Opportunities.....	13
Trading Post.....	13
Camp Spirit.....	13
Pack Flag.....	13
Special Days/Events.....	13
Tuesday – Photo Day.....	13
Tuesday – Ice Conservation Challenge.....	13
Wednesday – Bring-A-Buddy Day.....	13
Thursday – Watermelon Launch.....	13
Thursday – Family Night (begins at 5 pm).....	13
Other Important Stuff.....	14
Camp Announcements.....	14
Leave No Trace.....	14
Lost and Found.....	14
Evaluation/Survey.....	14
Recognition.....	14
Advancement.....	14
Participation Patch.....	15
Recognition Certificates.....	15
Coup Beads.....	15
Floodles.....	15
Campsite Awards.....	15
Jack-O-Melon Awards.....	15
Health & Safety.....	16
Special Safety Rules and Regulations for Day Camp.....	16
Basic First Aid Info.....	17
Youth Registration and Insurance Coverage.....	18

APPENDICES

- A Daily Responsibilities of Walking Leaders
- B Flag Ceremony
- C Program List/Categories
- D Egg Drop Instructions
- E Ice Conservation Instructions
- F Evaluation/Survey
- G Achievements
- H Security Procedures
- I Emergency Procedures
- J Camp Map

**Cub Scout Day Camp – 2010
Centennial Luau**

Red Tailed Hawk District

Key Staff Contact Information

Day Camp Director.....	Rodger McReynolds.....	816.916.0732
Day Camp Program Director	Diane Conner	913.269.7804
Admin Tent (Registrar).....	Susan Lux	913.620.5948
Tot Lot.....	Laurie Reuter.....	
Physical Arrangements	Jeff Turner	913.645.6360
First Aid Nurse.....	Denise Laughlin	
Security Manager		
Red Tailed Hawk District Director	Chris Rinella	816.560.2903
Heart of America Council Director.....	Jeff Tyler.....	816.942.9333

WELCOME CAMPERS!

On behalf of the Camp Staff, welcome to the Red-Tailed Hawk District's 2010 Day Camp: "Centennial Luau." We are looking forward to five fun-filled days for the boys. The intention of this manual is to help Walking Leader adults be prepared for the challenge of supervising and leading the boys through camp. We appreciate the time and energy you provide to make it all possible. We hope that you too will find our Day Camp experience to be fun and rewarding.

Please see **Appendix A** for a detailed account of Daily Responsibilities of Walking Leaders.

In addition to the **Walking Leaders**, there are many other adult volunteers that are responsible for running the Day Camp.

Pack Coordinator As you may know, each Pack has its own **Pack Coordinator** that organized the participation of his/her Pack. This included providing information to the Pack about Day Camp, coordinating paperwork, and recruiting adult volunteers for Walking Leaders and Camp Staff.

"Staffers" Next, there are the **Adult Staffers** and **Junior Staff**, volunteers provided by packs and troops across the district. They are responsible for running the Program Areas (activities) at Day Camp. They attended separate training sessions to learn about their specific responsibilities and daily routine at camp. They get to camp early to set up, and leave late after securing camp program materials. Each Pack is expected to help provide volunteers to serve as Adult Staffers. To operate the 18 program areas, approximately 50 Staffers are required to make Day Camp happen for about 500 boys.

"Key" Staff Key Staff are volunteers listed on the previous page whose positions serve the entire camp. Some of them spend up to 9-10 months planning and preparing for these five days of the year.

Professional Staff The one and only paid person on site at Day Camp is **BSA District Executive**, Chris Rinella. He takes the highest level of responsibility for the camp, working directly with the BSA, other districts and hundreds of volunteers.

We hope you all have a great week. Remember, Day Camp is planned with the boys in mind, in hopes they have a memorable experience. Stretch yourself – try something different. Be determined to step forth in the spirit of Cub Scouts and make a lasting memory for both you and the boys in your care. Please know that you are very much appreciated.

In the Scouting Spirit,
Rodger, Diane, Susan, and Chris

TRANSPORTATION

Please be aware of the Transportation Plan that was submitted by your Pack Coordinator on behalf of your pack. It is Parking Lot Security's guideline for whom is allowed on premises.

If your pack is traveling by car, the first car to arrive that is listed on the form will receive wristbands for all of the pack's walking leaders for that day. The cars that follow simply need to verify with security personnel that their vehicle is listed on the transportation form and is carrying campers.

If your pack is traveling by bus, we encourage you to do multiple head counts before the bus leaves Day Camp.

Adults not on the transportation form will be directed to the Admin Tent for check-in and to submit proper paperwork before being admitted to camp. There will be no exceptions.

In addition, please note the following national BSA policy with regard to the transportation of youth:

"Every boy MUST have a seat, and wear a seat belt". Also, please be mindful of passenger air bags. The transportation of boys in the bed of a pickup truck is prohibited. This policy will be strictly enforced and anyone not adhering will not be allowed to enter camp.

CAMP LEADERSHIP REQUIREMENTS

Red-Tailed Hawk Day Camp requires each Pack to have a ratio of one (1) adult Walking Leader for every five (5) boys. There must be two adult leaders with a group at all times, no matter how few boys a pack might have. It is recommended that each Pack have at least four adult leaders daily, to provide for restroom trips or any other need for separation, so that two-deep leadership is always maintained.

- **Health Forms** - Every person must have a completed health form on file to be allowed to enter camp. This includes Cubs, Den Chiefs, Walking Leaders, Tot Lot participants, Staff and "Buddy Day" visitors. The only exception to this is for the after-hours Family Night activities. All forms must be signed.
- **Walking Group Sizes** - Program areas can handle up to 32 boys at one time, however, the optimal group size is 24 boys. If your Pack is larger than this you may be asked to divide them into smaller groups to stay in line with this number. Please understand that this is done to optimize the experience of the boys at Day Camp.
- **Youth Protection Guidelines** – At least one of the pack's daily Walking Leaders must have taken the BSA Youth Protection online training course. The training is valid for two years. For your reference and for those who may not have taken the online training course, we ask that all Walking Leaders be familiar with the basic guidelines for Youth Protection that are listed on the next page.

TEN YOUTH PROTECTION POLICIES

After selecting the best possible leaders, further protection for children is structured into the program. The following policies have been adopted to provide additional security for youths in the program. In addition, they serve to protect adult leadership from situations in which they are vulnerable to allegations of abuse.

- 1. Two-deep leadership.** Two registered adult leaders or one registered adult leader and a parent of a participant, one of whom must be 21 years of age or older, are required on all trips and outings. The chartered organization is responsible for ensuring that sufficient leadership is provided for activities of the Order of the Arrow as well as provisional unit activities.
- 2. No one-on-one contact.** One-on-one contact between adults and youth members is not permitted. In situations that require personal conferences, such as a Scoutmaster's conference, the meeting is to be conducted in view of other adults and youths.
- 3. Respect of privacy.** Adult leaders must respect the privacy of youth members in situations such as changing into swimming suits or taking showers at camp and intrude only to the extent that health and safety requires. They also need to protect their own privacy in similar situations.
- 4. Separate accommodations.** When camping, no youth is permitted to sleep in the tent of an adult other than his own parent or guardian. Councils are strongly encouraged to have separate shower and latrine facilities for females and when separate facilities are not available, times for male and female use should be scheduled and posted for showers.
- 5. Proper preparation for high-adventure activities.** Activities with elements of risk should never be undertaken without proper preparation, equipment, clothing, supervision and safety measures.
- 6. No secret organizations.** There are no "secret" organizations recognized by the Boy Scouts of America. All aspects of the Scouting program are open to observation by parents and leaders.
- 7. Appropriate attire.** Proper clothing for activities is required – for example, skinny-dipping is not appropriate as part of scouting.
- 8. Constructive discipline.** Discipline used in Scouting should be constructive and reflect Scouting's values. Corporal punishments are never permitted.
- 9. Hazing prohibited.** Physical hazing and initiations are prohibited and may not be included as part of any Scouting activity.
- 10. Junior leader training and supervision.** Adult leaders must monitor and guide the leadership techniques used by junior leaders and see that BSA policies are followed.

These policies represent the long-standing commitment that the Boy Scouts of America use in ensuring the protection of our youth. Adherence to them greatly minimizes the opportunity for abuse to occur within the BSA program.

A FINAL WORD ON YOUTH PROTECTION

Child abuse is a crime against youth that can involve the mental, physical or sexual victimization of children. The Boy Scouts of America has made it a policy that the Scout Executive of each council, as well as key members of professional and volunteer staffs, becomes familiar with child abuse and its various manifestations.

If you suspect that a child in camp is a victim of child abuse, you **MUST** report this to the Professional at camp or call, 816/942-9333 and ask for your District Executive. Be assured that discretion will be used as the situation is investigated.

Heart of America Council Policy on Youth Protection states: Each unit needs to have at least one adult walking leader trained in Youth Protection in attendance daily.

WHAT TO BRING TO CAMP

Adult Leader's Daily List

Daily Attendance Roster – Youth
Daily Attendance Roster – Adult
Walking Leader Guide (this book)
Sack lunch
Water bottle
Coolers with ice (required for lunch storage)
Container of water for group
Trash bags
Group Schedule(s)
Sunscreen (non-aerosol, please)
Bug Repellent (non-aerosol, please)

Optional:

Hat
Group "pick-me-up" treats
Group lunchtime and/or snack time drink
Comfortable portable chair
Supply of crayons, etc.*
Ideas for games, crafts, etc.

Boys Daily List

Sack lunch
Water bottle
Camp shirt
Camp coup
Sunscreen

Optional:

Squirt bottle
Backpack or sack for completed crafts and trading post items
Money for trading post
Bug repellent (non-aerosol)
Hat
Raincoat, poncho or trash bag
Back-up clothing
Back-up pair of shoes and socks

Special Note on Prescription Medicine: Any prescription medicine(s) that a Cub needs to take during Day Camp should be in a prescription bottle labeled with the boy's name, the medicine name, and dosage. The medicine should be kept and dispensed by the Walking Leader in charge of the scout(s).

EVERYONE'S Daily List



Smiles, everyone. Smiles !!!

CAMP WEEK

Daily Parking

When you arrive in the morning, you will be greeted by parking lot security. Security will have the Transportation Forms from each Pack, and will issue identification wristbands to all authorized adults on the form. Please keep in mind **Junior Staffers** will be assisting with parking cars. They are following directions they have been given. Please follow *their* directions.

Any adults not listed on the pack's Transportation Form will need to go directly to the Admin Tent to check in, fill out necessary paperwork, and get their wristband authorizing them to be on premises.

Walking Leaders in cars will be directed to park in the grassy area west of the parking lot. Buses will unload in the paved parking lot. A minimum of two walking leaders should gather their full groups in the parking area, and then proceed to their den home/campsite.

Daily Check-In

One adult takes the pack's Daily Attendance Roster – Youth and Daily Attendance Roster – Adult to the Admin Tent. New copies of these forms should be used for each day of the week, reporting the attendance of all Cubs for the day and submitting any early dismissal notes to the registrars.

Early Check Out

If a Cub Scout needs to leave camp early, a note will need to be submitted to the Admin Staff with the pack's daily roster. When it is time for the boy to leave camp, he will need to be escorted to the Admin Tent for check-out by TWO adult leaders. The adult specified to pick up the Cub Scout will need to present photo ID to the registrars in the Admin Tent, and more than likely to parking lot security as well. All early dismissals will be signed out by the Camp Director, Camp Program Director or the BSA District Executive. See the Security Procedures for more details.

Attire

Please note that **NO ONE** on premises should wear open-toe shoes, sandals, flip-flops, Crocs or bare feet! Additionally, anyone wearing clothing items not considered inappropriate may be asked to modify their attire. "Inappropriate attire" means halter tops, low-cut tops or short shorts.

- | | |
|------------------|---|
| Cub Scouts: | Camp T-Shirt
Shorts or pants
Socks
Comfortable shoes |
| Tot Lot kids: | Camp T-Shirt |
| Camp Staff: | Camp T-Shirt |
| Camp Directors: | Camp polo |
| Walking Leaders: | Daily wristbands |



Anyone in the Camp area not in uniform or wearing wristband should be reported to Security or the Camp Director. See Security Procedures for details.

Opening Flag	<p>The flag will fly each day in Day Camp except during rainy weather. All Staff, Cubs, Den Chiefs, and leaders are expected to be present at Opening and Closing flag.</p> <p>Packs are encouraged to volunteer to lead an opening or closing flag ceremony during camp (see Appendix B). They may begin signing up on Sunday before camp begins on a sign-up sheet at the Admin tent. Sign up will be handled on a first come, first served basis. The Admin tent will also provide the flag ceremony commands in large print at the flagpole. If you have any questions, please ask, we will be happy to help.</p>
Flag Etiquette	<p>Cubs should stand at attention, hands at sides (unless saluting), and all eyes on the flag. There should be no talking, giggling or whispering.</p> <p>ANY PERSON ANYWHERE ON THE CAMP GROUND SHOULD STAND AT ATTENTION, FACING THE FLAG, DURING FLAG CEREMONIES.</p> <p>Non-uniform caps should be removed, and hands placed on hearts.</p> <p>The camp salutes the colors when command "Scout Salute" is given. The salute is held until the flag reaches the top and the command "two" is given.</p> <p>Since we will be wearing uniforms (our Camp T-shirts), the Cub Scout salute should be done by holding two fingers to the forehead. At retreat, the camp is commanded to salute when the flag starts down and the salute is held until the command "two" is given.</p> <p><u>Specific instructions for scouts performing the flag ceremony will be provided.</u></p>
Daily Schedule	<p>Your daily rotation schedule will be provided to you at camp set-up on Sunday between noon and 3 pm. Five activities rotations per day will stop you at field or range sports, crafts, physical fitness fun or Cub-related/mildly educational areas. See Appendix C for details.</p>
Noontime Surprise	<p>After lunch and before afternoon rotations, there will be a special surprise for the entire camp. Either a special guest or a special treat (maybe both) will be waiting for you.</p> <p>Additionally, Camp Announcements may be made at the Noontime Surprise gathering.</p>
Free-Time Opportunities	<p>There will be two free periods during the week where no activity is scheduled for your pack. You may choose to participate in one of the following:</p> <ul style="list-style-type: none"> • Visit the Trading Post • Participate in the Egg Drop Contest (see Appendix D) • Check out leather stamping equipment • Check out any other available equipment from the Admin tent • Bring your handbooks and work on requirements. Some simple ones may be done easily during 10-15 minutes of free time. • Do your own activity or game within your pack.

Additional Opportunities There is fun at every turn. If four rotations a day isn't enough for your Cub Scouts, consider taking part in the following (and see below, "Special Days/Events):

- Ice Conservation (Tuesday Only) (see **Appendix E**)
- Daily Estimation Games (Admin Tent)
 - The closest guesses win the treat.
 - Guesses are due before the beginning of the 3rd Rotation each day (1 pm)

Trading Post The Trading Post will be open daily from 9:30 am to 2:50 pm, and on Thursday's "Family Night" it will be open from 5:00 pm-7:00 pm. An assortment of souvenirs, crafts, and other BSA items will be available, as well as Day Camp shirts in all youth sizes. You might want to plan this visit so the boys can bring their money that day.

Camp Spirit We love to hear the boys sing and have a good time. Key Staff will be giving "spirit floodles" to groups they hear singing and giving pack yells along the pathway. So show your spirit! March with cadence ("I don't know but I've been told . . ."), or yell to other traveling groups:

WE'VE GOT SPIRIT, YES WE DO! WE'VE GOT SPIRIT, HOW 'BOUT YOU!!!

Pack Flag Who are you? Let the boys pick a name for the group and then make a flag telling us who you are as you carry your flag from area to area. You must furnish all materials and there are no camp specifications as to what size or material your flag is made. This flag is also a great place to display any special awards your group may earn and floodless they made trade!

SPECIAL DAYS/EVENTS

Tuesday **Pack Photo Day** – A professional camp photographer will take a picture of the whole camp at noontime surprise time and will be visiting the activities during the afternoon. You may also get his attention during the lunch hour to get pictures of your Pack and your campsite.

Tuesday **Ice Conservation Day** - See **Appendix E** for details on this challenge!

Wednesday **"Bring a Buddy Day"** - Wednesday is designated as Bring a Buddy Day. This is a recruiting opportunity for your pack! The buddy must be Cub Scout aged and he must have a health form and a permission slip. There is no charge for the buddy to participate in camp.

Thursday **Watermelon Launch** – Your pack will be provided a watermelon that you will be responsible – and judged – on designing similar to a jack-o-lantern.

During the mid-day break at 2:00 pm, we will judge then launch the watermelons.

Thursday **"Family Night"** – Families are invited to come to camp after 5:00 pm Thursday, picnic with the boys and visit the program areas. The ranges will be open, as will the Trading Post. Check with the



Admin Tent to find out what other areas may be open (hopefully the water slide, monkey bridge, barrel ride, obstacle course and tire swing).

The activity areas are not to be entered if a staff person is not there. Campfire and flag retirement will close the evening, beginning at 7:00 pm.

Remember, no vehicles will be allowed at den homes for campsite breakdown until after camp closes at 8:00 pm.

OTHER IMPORTANT STUFF

Camp Announcements A map, master schedule and other announcements will be displayed outside the Admin tent.

Leave No Trace It's your camp - be proud of it!! Help keep it clean. Please teach boys a Scout always leaves the campsite better than he found it. Empty your campsite of trash before leaving each night. The trash dumpster is located near the Admin tent. If the dumpster is full, take trash home with you, do not leave on ground. Dumpsters are for daily camp trash only. Do not put your campsite decorations in the dumpster. These decorations must be taken home after the close of camp.

Lost and Found Bring any articles found that don't belong to you to The Admin tent. If you have lost any articles, check the lost and found area at The Admin tent. We will not be responsible for any misplaced items!! Be sure to mark names and pack # on everything that can be separated from the boys. Anything left after camp will be thrown away (after a possible attempt to return items at the following one or two Roundtables).

Evaluation/Survey Please take the time to fill out the evaluation sheet found at the back of this booklet. Remember.... this evaluation is our only means of communication with you on the quality of the camp we offer. Your honest opinions and suggestions will be greatly appreciated. When filling out the sheet, please keep in mind we cannot change the weather, bugs or terrain of the camp. See **Appendix F**.

Return the completed sheets at the closing ceremony on Friday or mail to:

Diane Conner
15171 W. 154th St.
Olathe, KS 66062

RECOGNITION

Advancements See **Appendix G** for a list of the achievements that were possible by attending Day Camp. Please remember that a boy only earns the award if he was present and participated in the activities.

Participation Patch	Each registered Cub Scout will receive a day camp participation patch. These patches will be in the package you receive upon final check-out on Friday.
Recognition Certificates	<p>Certificates of Recognition will be presented at closing ceremony on Friday to:</p> <ul style="list-style-type: none"> • Den Chiefs - All Den Chiefs will receive a "Certificate of Appreciation" for their help in providing leadership to the boys during camp. • Walking Leaders – Those volunteers who served as Walking Leader for all 5 days will also be recognized.
Coup Beads	<p>Beads will be given to the walking leaders at each of the daily program area rotations. Shower curtain rings are ideal for displaying the earned beads, adding it to the leather coup they will design at the leather stamping program area.</p> <p>Please keep in mind that we cannot replace lost beads. Walking leaders may wish to hand out beads to the boys at a break time to ensure the beads aren't lost in the grass.</p>
Floodles	<p><u>F</u>un, <u>L</u>oving & <u>O</u>utstanding <u>O</u>ppportunity for <u>D</u>ay campers, <u>L</u>eaders and staff <u>E</u>xpressing <u>S</u>pecial thanks. Floodles are for giving and getting!</p> <p>Getting - Key staff members will present groups with 2009 Day Camp floodles when they feel the group has displayed outstanding manners, courtesy or scout spirit. In addition, packs can earn other floodles for participating in the Egg Drop and Ice Conservation challenges.</p> <p>Giving - Packs may wish to thank staffers (both adult and junior staffers) at the program areas by presenting them with a pack-made floodle.</p> <p>Giving – Packs may also wish to recognize other packs for outstanding efforts at Day Camp, from an outstanding entrance to exhibiting scout spirit!</p> <p>Other opportunities for the kids to earn floodles include:</p> <ul style="list-style-type: none"> • Caught fish • Archery – Bulls-Eye • BB Gun – Sharpshooter • Fruit is Food – "I tried 'em all" • "Our Egg Survived" • We Conserved Ice!
Campsite Awards	<p>During the week, Day Camp staff will review campsites to ensure they are properly supplied. Additionally, we will recognize each pack for its campsite's strengths, possibly its entrance (creativity, boy involvement, identification, etc.), organization and cleanliness, in addition to the pack exhibiting "Scout Spirit" over the week.</p>
Jack-O-Melon Awards	Various awards available for creative jack-o-melons, as well as for how far they launch.



HEALTH AND SAFETY

Please be sure that all walking leaders review the Security Procedures (**Appendix H**) and Emergency Procedures (**Appendix I**).

SPECIAL SAFETY RULES AND REGULATIONS FOR DAY CAMP

- ❖ Only 6-11 year old registered Cub Scouts are allowed in the Day Camp area (except for family night or as Tot Lot participants).
- ❖ The only girls allowed in camp (except Tot Lot) are to be registered BSA Venturers or 18 years old or older working as a staff member or walking leader (except for family night).
- ❖ All cooking fires must first be cleared and approved at administration and can be only charcoal and contained in a portable grill. The use of liquid fire starter is prohibited.
- ❖ No Smoking or alcoholic beverages in the Day Camp area or within sight of the Campers.
- ❖ All glass bottles and containers are prohibited.
- ❖ Use the main Water Buffalo spigots for filling drink containers. Squirt bottles should be filled using your own sources. Fill one of your 5-gallon pickle buckets at the Water Buffalo, and have the kids refill their squirt bottles from it.
- ❖ Please observe and respect the QUIET SIGN (Cub Scout Sign held overhead) when used at Day Camp.
- ❖ Everyone should be at the Flag Mall for opening and closing. However, if for some reason you are not quite at the Flag Mall when the flag is being raised, please stop, remove hat, stand in place, and remain quiet until the flag is raised, then progress on to the Flag Mall quietly.
- ❖ Buddy System - boys must always have a buddy with them. Any boy found alone will be taken to the Admin Tent until his leader (and ONLY THE LEADER) comes for him.
- ❖ No pocketknives for the Cubs. If a Cub Scout is seen with a pocketknife, it will be confiscated and returned to his leader on Friday after the close of camp.
- ❖ No sandals or open toe shoes allowed in camp. Additionally, Crocs are discouraged because the coarse "grass" at Lake Olathe can be sharp enough to poke through these shoes. Please refrain from running, except for activities.

Water Rules

ABSOLUTELY NO WATER is PERMITTED in the Admin tent.

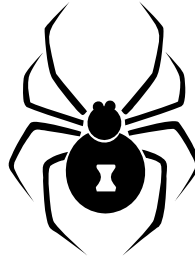
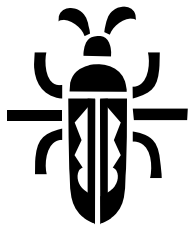
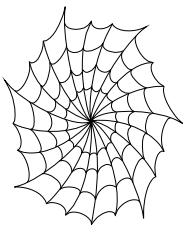
Water guns of any kind (pressurized, super-sized, tank guns, water bazookas) are not allowed at Day Camp. Please utilize squirt bottles to cool off and squirt only yourself.

Squirt bottles should NOT be filled at the main water buffalo.



BASIC FIRST AID INFO

- On-Site Staff** A registered nurse will be on duty during Day Camp hours. The First Aid station is located inside the Admin Tent. All injuries must be reported.
- Please do not attempt to treat injuries, accidents, insect stings, snake bites, poison ivy, etc., All program areas will have walkie talkies, and staff has been provided with cell phone numbers for all key staff on site, including the Camp Nurse. She should be contacted immediately to evaluate situations for medical severity. If a situation occurs in your den home that needs medical attention, please send a leader to the Admin Tent.
- Injury and Accidents** Do not move injured person. Send for help immediately, no matter how minor an injury may be considered.
- Ticks** Please be aware that ticks are heavy at Lake Olathe. Bug spray should be applied (and reapplied if necessary) to everyone on site at Day Camp. Wearing a hat will help. Have parents check the boys for ticks when reaching home. If you find a tick on a boy at camp, please take him to the Camp Nurse. If one is found at home, remove the tick and tape it to a piece of paper and bring it to the Camp Nurse the next morning. Per BSA regulations, even incidents as minor as ticks need to be documented. We will need to know the boy's name, Pack number and location on his body where the tick was found.
- Chiggers** To help get rid of chiggers before a person scratches them enough to make sores, have the camper take a bath with ½ cup bleach added to the water. Sulphur powder put on the body helps to prevent insects from biting, or spray on insect repellent before coming to camp.
- Sunburns** Day Camp is held during the week of one of THE MOST INTENSE SUNLIGHT RAYS OF THE YEAR. Please apply sunscreen early and often. A hat will also help.



YOUTH REGISTRATION AND INSURANCE COVERAGE

Please remember that ONLY THOSE CUB SCOUTS, BOY SCOUTS, AND ADULT LEADERS REGISTERED WITH THE COUNCIL are covered by the Boy Scouts of America's general accident and liability insurance policies. Thus, ONLY REGISTERED CUB SCOUTS are allowed to attend camp.

Most Red-Tailed Hawk District packs re-charter during the month of January, and all your boys should have been registered with your unit during this annual process. However, often times, many of them are not registered for one reason or another. During the month of May, a copy of your unit's new roster will be printed and placed in your unit's sack that you will pick up on the Sunday before your week at camp. The roster should be reviewed very carefully, and any boy(s) not listed who are planning on attending camp should be registered immediately.

The daily attendance sheets for your pack submitted on the first day of camp will be reviewed as well. If any unregistered boys are found at that time, the pack's walking leaders will be notified by a district representative before departing camp on Monday, and given a youth application for each unregistered boy. A completed application and a prorated registration fee or a copy of the pack's receipt from the council office showing payment at the time of re-chartering for each unregistered youth found, must accompany the pack's daily attendance sheets on Tuesday morning.

REMEMBER... Day Camp is a time for the boys to let go! The quality of fun the boys have at Camp will depend on the camp program PLUS you as a leader or parent. Let the boys yell, get dirty and most of all HAVE FUN! This is a time for the boys to be free from most restrictions. Have fun with them... you have a chance to be a kid again. Go ahead and get dirty with them... no one will notice, except the boys... who will love it!

5/18/10